



Mercedes-Benz 2005

## C-Class

C 230 Kompressor  
C 240  
C 320  
C 55 AMG



Mercedes-Benz



## Forget everything you know about driving

Slip behind the wheel of a new C-Class, boldly restyled and even more refined for 2005. It's the surest way to clear your mind of any preconceived notions. Bask in a comprehensively redesigned cabin that's been enhanced to bid you an even more definitive welcome. Delight to the invigorating kick of a supercharged four, one of two silky V-6s, or an incredible 362-hp V-8 in the new C 55 AMG. Enjoy a 5-speed automatic transmission that adapts to your driving style, or change gears with a crisp-shifting 6-speed manual in the C 230 Kompressor models and C 320 Sport models. Discover what confidence in a corner really means, whether you choose a rear-wheel-drive C-Class or one with the added all-season security of 4MATIC™ all-wheel drive. Experience contemporary C-Class luxury or the energizing look and feel of an exciting Sport variant. Whatever your preference, you'll find that superb design, legendary engineering, handcrafted detailing and outstanding value set these new C-Class models apart from all others. It's time to see what you've been missing—and to drive like you've never driven before. [Mercedes-Benz. You're ready.](#)



C 230 Kompressor Sport Coupe<sup>1</sup>



C 320 Sport Sedan



C 55 AMG Sport Sedan



C 320 Sport Coupe



C 230 Kompressor Sport Sedan

<sup>1</sup> Shown with optional Evolution Package.

## First impression

Different? Most definitely. The athletic shape of the 2005 C 230 Kompressor, C 240 and C 320 sedans has an even keener edge, with more seductive lower bodywork set off by jewel-like clear-lens headlamps and redesigned alloy wheels. There's more poise in the multilink suspension, thanks to sharper tuning, faster steering and a wider stance. Standard Electronic Stability Program (ESP) adds to its self-assured feeling, which is further heightened in 4MATIC™ all-wheel-drive models. You'll find a world of change in the elegantly appointed interior, where both form and function now have even more contemporary flair. More than ever before, the stunning C-Class sedans deliver an outstanding driving experience.



C 320 4MATIC Sedan shown with optional Capri Blue metallic paint, and Bi-Xenon headlamps with washers.

**a.**  
**16" 7-spoke wheels**  
New 16" aluminium-alloy wheels add a measure of sophisticated spark to the restyled C 230 Kompressor and C 240 Sedan models.

### C 230 Kompressor Sedan

189-hp 1.8-litre supercharged inline-4  
Standard 6-speed manual or optional  
5-speed Touch Shift automatic  
transmission  
16" 7-spoke alloy wheels  
Atlas Grey grille

### C 240 Sedan C 240 4MATIC Sedan

168-hp 2.6-litre V-6  
5-speed Touch Shift automatic transmission  
16" 7-spoke alloy wheels  
Atlas Grey grille

### C 240 Elegance Sedan C 240 4MATIC Elegance Sedan

168-hp 2.6-litre V-6  
5-speed Touch Shift automatic transmission  
16" 7-hole alloy wheels  
Atlas Grey grille with chrome ribs  
Colour-keyed door handles  
Chrome exterior accents

### C 320 4MATIC Sedan

215-hp 3.2-litre V-6  
5-speed Touch Shift automatic transmission  
4MATIC full-time all-wheel drive  
16" 7-hole alloy wheels  
Atlas Grey grille with chrome ribs  
Colour-keyed door handles  
Chrome exterior accents



a.

## Refinement redefined

A new vision of engaging indulgence awaits you inside the C-Class sedans. The fresh, intuitive dash design, now with an in-dash CD player, enhanced climate controls and a revised colour palette, may be the first thing to catch your eye. But look closer, and you'll discover a host of exquisitely evolved items, from striking new gauges to tasteful chrome accents. Classic luxury and contemporary charisma have never come together so seamlessly – or so elegantly.



## Distinguished choices

Impeccable appointments, outstanding craftsmanship and an inspired sense of style are at the heart of every C-Class Sedan. It starts with the visual and tactile captivation of hand-polished wood – Olive Ash in the C 230 Kompressor and C 240 Sedans, and Laurel in the C 240 *Elegance* and C 320 4MATIC models – along with supple, hand-fitted leather front seat inserts. The *Elegance* experience also includes fine leather on the steering wheel and gearshift knob, plus convenient entrance lamps in the doors. All C-Class sedans feature supportive 10-way front seats with power height and recline, with the C 320 4MATIC adding full 10-way power adjustment. Regardless of your destination, every C-Class Sedan offers new premium options like DVD-based navigation and a multicontour driver's seat that can make any journey more enjoyable.

C 240 *Elegance* Sedan shown with optional Stone premium leather.

**b. New instrument cluster**

Prominent circular gauges are ringed in classic chrome and flank a multifunction display that – along with steering-wheel controls – puts numerous vehicle functions at your fingertips.

**c. Refined climate controls**

Ergonomic enhancements bring a new level of user-friendliness to the dual-zone climate control system, while delicate chrome detailing enriches its overall appearance.

**d. Optional harman/kardon digital surround sound**

Optional on every C-Class model, the new harman/kardon® LOGIC7® 7.1-channel surround sound system is like having a concert hall on wheels. Eight amplifiers and 12 speakers deliver 320 watts of lifelike music power.

**e. In-dash CD player**

The standard 6-speaker sound system now includes an in-dash CD player plus a larger readout that's easier to view.

**f. Multifunction steering wheel**

You can adjust the volume of the audio system, program various vehicle settings, even check the standard trip computer using fingertip controls on the steering wheel and readouts in the multifunction dash display.

**g. Optional DVD-based navigation<sup>1</sup>**

The optional COMAND system integrates the controls for the new DVD-based GPS satellite navigation system, audio system, and optional telephone and glovebox-mounted 6-disc CD changer into one in-dash panel.

<sup>1</sup> Available only on C 320 Sedans and C 55 AMG.



b.



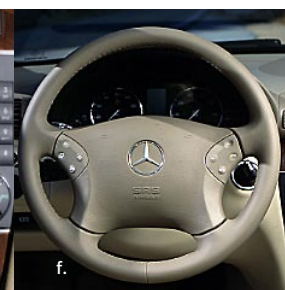
c.



d.



e.



f.



g.



C 240 Wagon shown with optional Brilliant Silver metallic paint.



## Prime mover

Efficiency experts with energetic style and spirit, the C 240 wagons play as well as they work. Smartly contoured lower bodywork, brilliant crystal-clear headlamps and chic 7-spoke alloy wheels add new verve to their youthful lines. Inside, a comprehensive renovation imparts even more panache to the exceptional practicality. While their supple ride remains, a retuned suspension and wider wheel track make these versatile charmers respond more quickly and confidently to your every input. And C 240 4MATIC™ Wagon models with all-wheel drive can help maintain that self-assurance, in any weather or road condition.

C 240 Wagon  
C 240 4MATIC Wagon

168-hp 2.6-litre V-6  
5-speed Touch Shift automatic transmission  
16" 7-spoke alloy wheels  
Atlas Grey grille

C 240 Elegance Wagon  
C 240 4MATIC Elegance Wagon

168-hp 2.6-litre V-6  
5-speed Touch Shift automatic transmission  
16" 7-hole alloy wheels  
Atlas Grey grille with chrome ribs  
Colour-keyed door handles  
Chrome exterior accents



**a.**  
**Optional Bi-Xenon headlamps**  
Available High Intensity Discharge headlamps with heated washers provide better vision on both low and high beams and include new corner-illuminating foglamps to help you negotiate curving roadways.

### Thoroughly inviting

Restyled to enhance fashion, feel and functionality, the C 240 wagon interiors maintain a bounty of traditional luxury cues that include hand-fitted leather inserts in the front seats set off by gleaming wood accents: beautiful Olive Ash in the C 240 Wagons, and alluring Laurel in the *Elegance* Wagons. *Elegance* variants also bring the added warmth of leather to the steering wheel rim and shift knob.

### Ultimately adaptable

Don't be fooled by its posh personality. Every C 240 wagon is a multitasking handyman in a designer suit. The spacious cabin can carry five plus plenty of their personal belongings. And when a ski holiday or antique bookcase takes priority, its rear seat folds completely flat to open up a generous 1,800-litre storage area.



C 240 *Elegance* Wagon shown with optional Stone premium leather, antitheft alarm system, headlamp washers and heated front seats.



b.

c.

### b. 60/40-split folding rear seat

People or packages, the C 240 wagons conform to your needs quickly and easily with a 60/40-split folding rear seat that more than doubles the carrying capacity of its rear storage bay.

### c. Partition net and luggage cover

The standard vertical partition net can be set up in two locations to help separate the passenger compartment from the cargo area. A retractable luggage cover glides along side rails and retracts with a single touch.



C 240 *Elegance* Wagon shown with optional Stone premium leather.



C 230 Kompressor Sedan shown with optional Granite Grey metallic paint and sunroof.



#### C 230 Kompressor Sport Coupe

189-hp supercharged 1.8-litre inline-4  
Standard 6-speed manual or optional 5-speed  
Touch Shift automatic transmission  
16" 5-spoke aluminium-alloy wheels

#### C 320 Sport Coupe

215-hp 3.2-litre V-6  
Perforated Silver grille  
17" 7-spoke aluminium-alloy wheels  
Colour-keyed door handles  
Polished chrome exhaust tip



C 320 Sport Coupe shown in Black with optional Panorama roof.

### Centre of attention



What you wear on the outside is an expression of how you feel inside. The 2005 C-Class Sport Coupes' aggressive attitude is reflected by 360 degrees of new, more intense exterior style, from brilliant clear-lens headlamps to restyled taillamps. Its assertive look demands attention, with artistically contoured lower bodywork, larger front air intakes, LED turn signals in the side mirror housings, and bold new aluminium-alloy wheels. The optional Chrome Package adds bright accents to the bumpers, rub strips and door handles that further highlight the shining personality of any C-Class Sport Coupe.



#### C 230 Kompressor Sport Coupe Interior

- 10-way adjustable sport front seats
- 4-way adjustable steering column
- Dual-zone climate control
- 6-speaker AM/FM/CD audio system
- Optional harman/kardon® surround sound

#### C 320 Sport Coupe Interior

- All C 230 Kompressor features at left, plus:
- Leather-trimmed sport steering wheel
- Rubber-studded metal pedals
- Silver sport shift knob

C 320 Sport Coupe shown in Black with optional automatic transmission, headlamp washers, power driver's seat and steering column, heated front seats, and COMAND system.



Put the power windows up. Turn the Sport Coupe's powerful sound system—featuring six speakers and a standard CD player—way up. Then take a moment to just sit back and savour a bevy of new sensations. The redesigned interior offers 10-way adjustable sport front seats and a new multifunction steering wheel (a leather-wrapped rim is standard in the C 320, optional in the C 230 Kompressor) that lets you change CD tracks, adjust the audio volume or even see how far you can go before a fuel stop. Charcoal-colour grooved aluminium trims the console and doors, while chrome accents encircle the new gauges. Both models also feature the added functionality of a 60/40-split folding rear seat. With all this, there's still room in the Sport Coupe's spotlight for options like a DVD-based navigation system and a Panorama glass roof.



C 230 Kompressor Sport Sedan

189-hp 1.8-litre supercharged inline-4  
Standard short-throw 6-speed manual or optional  
5-speed Touch Shift automatic transmission  
17" 5-spoke aluminium-alloy wheels  
Lowered sport suspension

C 320 Sport Sedan

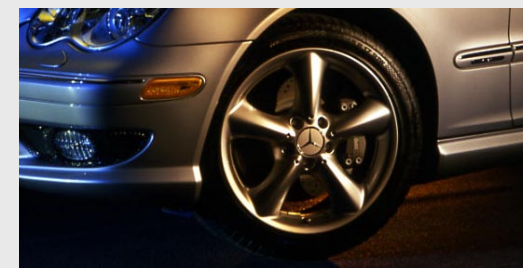
215-hp 3.2-litre V-6  
Standard short-throw 6-speed manual or optional  
5-speed Touch Shift automatic transmission  
17" 5-spoke aluminium-alloy wheels  
Lowered sport suspension

C 230 Kompressor Sport Sedan shown with optional Pewter metallic paint and Bi-Xenon headlamps with washers.



## International jetsetter

All work and no play can make for a very dull world. Fortunately the C-Class Sport Sedans were created to help keep a keen edge on your competitive spirit. The newly redesigned 2005 C 230 Kompressor and C 320 Sport Sedans feature new AMG-design lower body styling – including a muscular front apron with mesh inserts and aggressively contoured side sills – and staggered-width 17" 5-spoke aluminium-alloy wheels rolling on a lowered sport suspension with a wider wheel stance. Since living life in the fast lane demands that you look the part, we've also given the Sport Sedan extra touches such as new clear-lens headlamps, cool blue-tinted glass and a stainless-steel exhaust finisher. Even if you aren't quite a jetsetter on the international level, at least you can be one on a city street near you.



### C 230 Kompressor Sport Sedan Interior

10-way sport front seats with power height and recline  
Dual-zone climate control  
6-speaker AM/FM/CD audio  
Leather front seating inserts

### C 320 Sport Sedan Interior

10-way power sport front seats with 3-position memory  
4-way power steering column  
Dual-zone climate control  
6-speaker AM/FM/CD audio  
Leather front seating inserts



Carpool all-star

C 320 Sport Sedan shown in Ash with optional headlamp washers, antitheft alarm system, power rear-window sunshade, COMAND system and heated front seats.



Energy meets synergy inside the spacious C-Class Sport Sedans. Silver linear-patterned aluminium trim on the doors and console sets a high-spirited tone that's complemented by a multifunction sport steering wheel, new hooded chrome-ringed gauges and rubber-studded aluminium pedals. Deeply bolstered sport front seats with leather seating inserts grab and hold you during hot cornering, while the dual-zone climate control helps you keep your cool. A 6-speaker AM/FM sound system with a new in-dash CD player is standard, while a new 320-watt 12-speaker harman/kardon® LOGIC7® 7.1-channel digital surround sound system and a 6-disc changer are options. It's time for you to feel the adrenaline rush.

## Interior

Nappa leather upholstery  
 Heated 10-way power sport front seats  
 AMG-design instrumentation  
 6-speaker AM/FM/CD audio

## Exterior

Staggered-width 18" wheels  
 CLK-inspired front-end styling  
 AMG-design lower bodywork  
 AMG-design rear lip spoiler



C 55 AMG Sport Sedan shown in Brilliant Silver metallic paint with optional Bi-Xenon headlamps with washers.

## The fast and the luxurious

In a world where performance-car style seems to be far more common than actual performance, the C 55 AMG Sport Sedan<sup>1</sup> gives you both. No doubt, the C 55 looks the part of a true sports car – with CLK coupe-inspired front sheet metal, aggressive lower bodywork and staggered-width 18" wheels.<sup>2</sup> But the C 55 also drives the part, with a massively powerful handcrafted AMG V-8 engine churning out 362 hp and a 0–100-km/h rush of just 5.1 seconds.<sup>3</sup> A 5-speed automatic puts manual-style shifting right at your fingertips with steering wheel-mounted buttons, while AMG SpeedShift™ programming delivers 35% quicker gear changes. Huge 4-wheel AMG disc brakes bring the C 55 to an almost instant stop. Inside the C 55's high-performance cabin, highly supportive sport front seats are wrapped in luxurious Nappa leather with Alcantara upper bolsters, while the doors and console are trimmed in cool aluminium. It's all designed to move you as eagerly as the red needle on the 320-km/h speedometer.<sup>4</sup>

<sup>1</sup> Delayed availability. See your dealer. <sup>2</sup> AMG 18" wheels and accompanying high-speed-rated tires provide substantially increased treadwear and reduced ride comfort compared to H-rated tires. Serious wheel and tire damage may occur if the vehicle is operated on rough or damaged road surfaces or upon encountering road debris or obstacles. <sup>3</sup> Stated rates of acceleration are based upon manufacturer's track results and may vary depending upon model, environmental and road surface conditions, driving style, elevation and vehicle load. <sup>4</sup> Please obey all speed laws. Top speed electronically limited to 250 km/h.





C 55 AMG Sport Sedan shown in Ash with optional power rear-window sunshade and antitheft alarm system.



## AMG

### Performance

#### Engine:

Handcrafted 5,439-cc AMG V-8  
362 hp @ 5,750 rpm  
376 lb-ft of torque @ 4,000 rpm

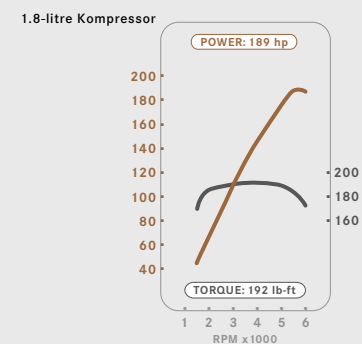
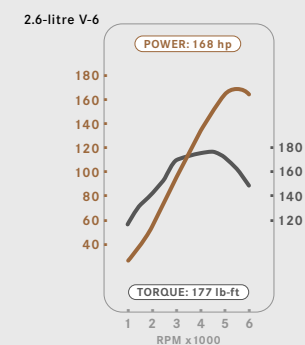
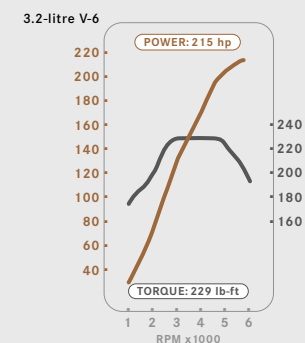
#### Transmission:

Driver-adaptive 5-speed automatic with  
Touch Shift, AMG SpeedShift  
programming and fingertip manual mode

## Premium performers



An exhilarating supercharged four and two smooth, responsive V-6s seamlessly interface with equally refined 6-speed manual and 5-speed automatic transmissions to give the C-Class lineup an energetic edge. All three engines use lightweight alloy blocks and cylinder heads to trim weight and improve overall vehicle balance. With electronic management systems that precisely control the fuel and ignition for each cylinder, they're also masters of clean, efficient operation. Completing each of these winning combinations is a transmission designed to help optimize total performance in a way that maximizes your total driving pleasure.



### C 230 Kompressor 1.8-litre supercharged four

Supercharged and intercooled for outstanding responsiveness, the 1.8-litre four in the C 230 Kompressor models makes a robust 189 hp and 192 lb-ft of torque. Variable valve timing endows it with an exceptionally broad power band for quicker acceleration and better passing performance.

### C 240 2.6-litre V-6

Balancing refinement and enthusiasm, the 2.6-litre V-6 in the C 240 models generates a spirited 168 hp and 177 lb-ft of torque. Every rear-wheel-drive C 240 is also a Flexible Fuel Vehicle that can be fueled with premium gasoline, ethanol (E85) or a blend of E85 and gasoline.

### C 320 3.2-litre V-6

The exhilarating character of every C 320 starts with a 3.2-litre V-6 that makes a robust 215 hp and 229 lb-ft of torque. The C 320 Sport Coupe and Sport Sedan are also Flexible Fuel Vehicles.





C240 Elegance Sedan shown with optional Granite Grey metallic paint, sunroof, and Bi-Xenon headlamps with washers.

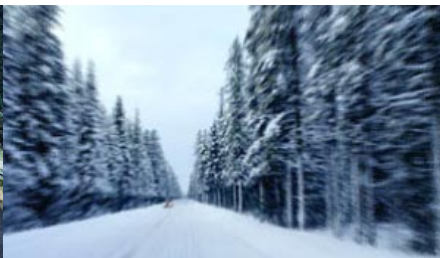
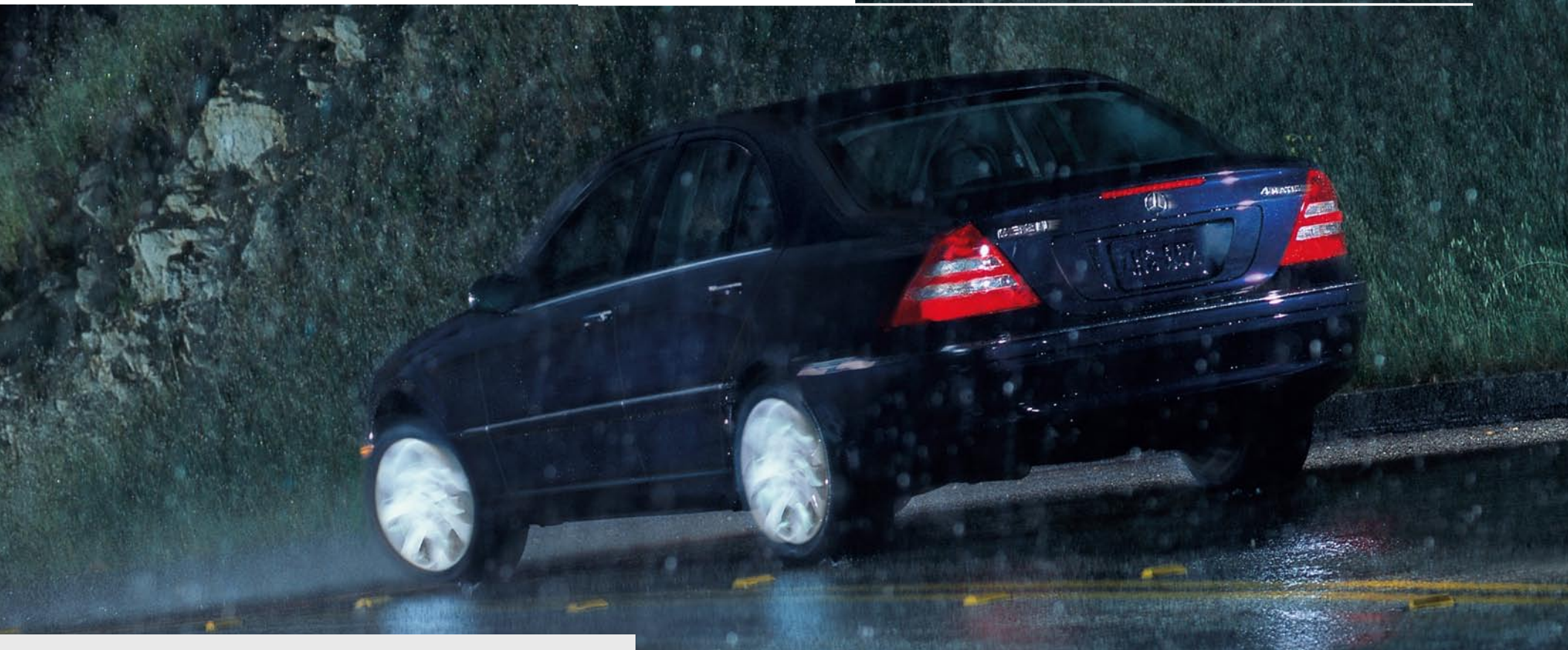


Standard on every Sport Coupe and Sport Sedan is a new-generation 6-speed manual transmission with direct-acting single-rod linkage that delivers a better, more precise feel. We've also shortened the shift throws to help facilitate quicker changes while allowing you to maintain a more comfortable driving position.



Optional on the Sport Coupes and Sport Sedans and standard on all other C-Class models is a driver-adaptive 5-speed automatic transmission that matches its shift points to suit your driving style. This incredibly smooth operator even has a Touch Shift feature that puts you in charge of gear changes with manual-style control.





## Best foot forward

### 4MATIC all-wheel drive

The 4matic™ system is fully automatic: It's always engaged and always sending torque to every wheel. And 4matic is integrated with our standard Electronic Stability Program (ESP), which maximizes the effectiveness of 4matic in corners.

### 4-wheel Electronic Traction System

To help ensure that the driving power translates into control, 4matic incorporates our 4-wheel Electronic Traction System (4-ETS). 4-ETS monitors each wheel for the first sign of wheel slip, and can individually brake a slipping wheel to maintain the balance of power or reduce excess torque. By continuously ensuring that power goes to the wheels with grip, 4matic can help get you going, even if only one wheel has traction.

Whether you're on a rain-slicked highway in the middle of the night or challenging a delightfully serpentine back road on a bright summer day, you'll find our all-wheel-drive C 240 and C 320 4MATIC models ready to provide an extra measure of handling confidence.<sup>1</sup> 4MATIC all-wheel drive can make a performance difference you'll feel, regardless of the season or the road conditions.

<sup>1</sup> No system, no matter how sophisticated, can repeal the laws of physics or overcome careless driving actions. Best performance in snow is obtained with winter tires. Please always wear your seat belt.



## You never know who you might run into

It happens when you least expect it. And even though you can't predict an accident, you can prepare for one. It's something Mercedes-Benz has been doing for over half a century. Our integrated approach to safety starts by optimizing your ability to stay out of harm's way, with responsive handling and features such as our Electronic Stability Program (ESP) and emergency-sensing Brake Assist. When a collision is simply unavoidable, the C-Class is prepared to help protect you with a robust structure, advanced safety technologies and the most standard air bags in its class. You might not know what lies around the corner, but you can drive confidently knowing your C-Class is always ready for an impromptu meeting.

### Active Safety

To help you avoid an accident:

- Electronic Stability Program (ESP)
- 4-wheel multilink suspension
- Quick-ratio rack-and-pinion steering
- 4-wheel disc brakes with ABS and Brake Assist

### Passive Safety

To help protect you in an accident:

- Reinforced body structure
- Seat-belt Emergency Tensioning Devices
- Seat-belt force limiters
- A head restraint for every occupant
- Adaptive dual-stage front air bags
- Four side-impact air bags
- Head Protection Curtains
- Optional Tele Aid system

### Advanced seat belts

All four outboard seat belts feature Emergency Tensioning Devices (ETDs), which help remove seat-belt slack in a sufficiently severe front or rear impact, and belt force limiters, which can help reduce the peak deceleration forces on belted occupants.



### High-strength/low-alloy steel

HSLA steel is used in critical areas throughout the C-Class body shell, to help create an exceptionally rigid structure designed to maximize integrity and minimize chassis flex for improved handling precision.



### Eight standard air bags

Every C-Class provides the 10-way protection of eight standard air bags, including adaptive dual-stage front air bags, four side-impact air bags, and Head Protection Curtains along the side windows for all four outboard occupants.<sup>1</sup>



### Side-impact protection

Reinforced doors, door sills, floorpan, roof and dashboard supports in every C-Class are part of an integrated safety structure that affords formidable side-impact protection.

### Occupant Classification System

OCS automatically turns the front passenger's front air bag on or off—or helps determine its inflation rate—based on the weight category determined by weight sensor readings from the front passenger seat.<sup>2</sup>

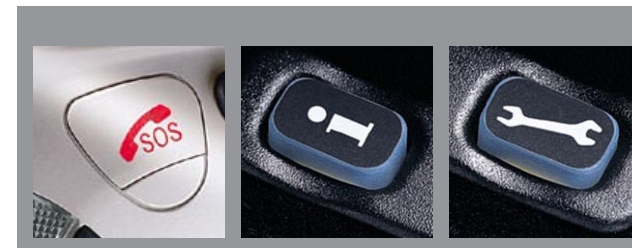


### Advanced crumple zones

Front and rear crumple zones feature full-width crossmembers, an ellipsoidal front bulkhead to help transfer impact energy around the cabin, and staggered underhood components designed not to stack up as the front zone deforms.

### Tele Aid

The optional Tele Aid system uses GPS satellites plus a digital cellular link to provide 24-hour live assistance at the touch of any of three buttons in your C-Class. If you need help—or see someone who does—the SOS button is for summoning emergency aid. Press the *i*-button for information. And the wrench button connects you to our legendary Roadside Assistance. Tele Aid also includes Automatic Collision Notification, which engages the SOS function if an air bag or Emergency Tensioning Device (ETD) deploys, as well as stolen vehicle tracking and remote keyless unlocking service.<sup>3</sup>



**1 WARNING:** THE FORCES OF A DEPLOYING AIR BAG CAN CAUSE SERIOUS OR FATAL INJURY TO A CHILD UNDER AGE 13. THE SAFEST SEATING POSITION FOR YOUR CHILD IS IN THE REAR SEAT, BELTED INTO AN APPROPRIATE, PROPERLY INSTALLED CHILD SEAT, OR CORRECTLY WEARING A SEAT BELT IF TOO LARGE FOR A CHILD SEAT. SEE OPERATOR'S MANUAL FOR ADDITIONAL WARNINGS AND INFORMATION ON AIR BAGS, SEAT BELTS AND CHILD SEATS. **2** C 230 Kompressor and C 320 Sport Sedans produced before approximately late summer 2004 and the C 55 AMG do not include OCS but feature the BabySmart™ system, which automatically deactivates the front passenger's front air bag when an accessory BabySmart-compatible child seat is properly installed. WITH THE **BABYSMART** SYSTEM, **A CHILD UNDER 13 MUST NOT USE THE FRONT SEAT** UNLESS THE CHILD IS BELTED INTO AN APPROPRIATE, PROPERLY INSTALLED **BABYSMART-COMPATIBLE** CHILD SEAT AND THE "PASSENGER AIR BAG OFF" INDICATOR REMAINS ILLUMINATED. At time of press, the toddler seat (for children 9–18 kg) is not approved for use in Canada. **OCS** IS DESIGNED TO TURN THE FRONT PASSENGER'S FRONT AIR BAG OFF WHEN THE SYSTEM SENSES THE WEIGHT OF A TYPICAL CHILD 12 MONTHS OLD OR LESS, PLUS THE WEIGHT OF A STANDARD APPROPRIATE CHILD RESTRAINT. SEE OPERATOR'S MANUAL TO DETERMINE WHICH SYSTEM YOUR VEHICLE HAS, FOR IMPORTANT ADDITIONAL INFORMATION ON THESE SYSTEMS, AND FOR FURTHER INFORMATION REGARDING THE TRANSPORTATION OF CHILDREN HEAVIER THAN A TYPICAL 12-MONTH-OLD. **3** First year's monitoring provided at no cost with subscription. Subscription is required for service to be active. Tele Aid operates only where cellular and Global Positioning System coverage are available. Owner must authorize stolen vehicle tracking and file a police report.



C 240 Elegance Sedan shown in Black with optional Bi-Xenon headlamps with washers.

## The first name in service

The innovative spirit that drives us to create the world's finest vehicles is directly reflected in an impressive selection of owner benefits. Consider the 24-hour Mercedes-Benz Roadside Assistance Program, the first of its kind. Our Flexible Service System lets you go farther than ever between scheduled oil changes. And our Customer Service Centre can provide answers to questions about your vehicle. When we invented the first car in 1886, we also created the first car owner. For nearly 120 years, it's been our passion to ensure that driving a Mercedes-Benz remains an experience that's second to none.

### **24-hour Roadside Assistance**

During the basic warranty coverage of 48 months and the time duration of the optional Extended Limited Warranty, Mercedes-Benz Roadside Assistance will be at your service. We'll bring you some gas, replace a flat tire with your spare, or jump-start your car. In the event of a mechanical breakdown, if attempts by our Roadside Assistance technician have not made your vehicle safely operable, towing service will be provided to the nearest Mercedes-Benz dealership. Assistance is available 24 hours a day, every day, to anyone driving a Mercedes-Benz anywhere in Canada or the continental U.S.<sup>1</sup>

### **Wear and tear coverage**

For 24 months or 40,000 km (whichever comes first) many items normally considered "wear and tear," such as light bulbs, wiper blade refills, and brake pads and discs, are covered. If necessary, an authorized Mercedes-Benz dealer will replace these parts at no charge to you.

### **Customer service**

Owning a Mercedes-Benz means that when you have a question, we're here to help. Our Customer Service Centre is open from 9 a.m. to 5 p.m. EST, Monday through Friday, and is staffed with knowledgeable Mercedes-Benz people who can talk you through the finer points of working your car's audio system—or even assist you in locating the nearest Mercedes-Benz dealership. Just call 1-800-387-0100. It's that simple.

### **Mercedes-Benz warranties**

The Mercedes-Benz New Car Limited Warranty covers defects in materials or workmanship for 48 months or 80,000 km, whichever occurs first. Major components such as the engine, transmission, drivetrain, fuel and cooling systems, steering and brakes are covered for 5 years or 120,000 km. To widen your window of confidence, you can opt for a Mercedes-Benz Extended Limited Warranty as well.<sup>2</sup>

### **Time for basic maintenance?**

#### **Ask your C-Class.**

No two drivers are the same. That's why the Flexible Service System in your C-Class monitors certain indicators of oil condition, engine loads, rpm, operating temperatures and your driving habits to determine when basic maintenance is really necessary.<sup>3</sup> Then a display on the dash reminds you to contact your Mercedes-Benz dealer for an appointment. So you can spend less time servicing your C-Class and more time enjoying your life.

### **Genuine Mercedes-Benz parts**

Your dealer has access to a vast inventory of parts for both new and vintage Mercedes-Benz vehicles. And we've made a nationwide effort to encourage our dealers to keep parts and labour prices competitive with those of independent garages.

### **Trip Interruption reimbursement**

If a breakdown covered by your New Car Limited Warranty occurs more than 80 km from your home, leaves your Mercedes-Benz vehicle inoperable or unsafe to drive, and requires overnight repairs, we've got you covered. You will be reimbursed up to \$500 for hotel accommodations and up to \$600 for alternate travel expenses per incident while your car is being repaired at an authorized Mercedes-Benz dealership.

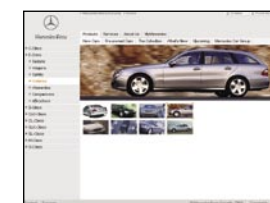
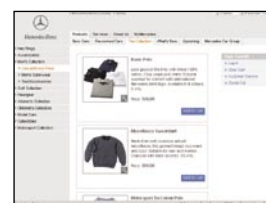
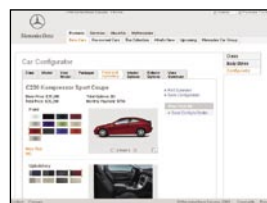
### **Alternate Transportation**

Your life doesn't have to get put on hold just because it's time for service or maintenance on your car. That's why your Mercedes-Benz dealer always endeavours to provide you with alternate transportation when you drop off your vehicle for service.<sup>4</sup>

## Firsthand knowledge

### Our world – at your fingertips

Still looking for more Mercedes-Benz information? Visit [mercedes-benz.ca](http://mercedes-benz.ca) to open an online window to Mercedes-Benz and our vehicles. Here, you can get information about any model, download eBrochures or take a look at financing and leasing options. Our website also offers details about European Delivery, the Mercedes-Benz Extended Limited Warranty, upcoming product information, Mercedes-Benz Customer Care, and more – including the history of Mercedes-Benz. There's a world of information, but only one address to remember: [mercedes-benz.ca](http://mercedes-benz.ca).



[mercedes-benz.ca](http://mercedes-benz.ca)

ENGINE	C 230 KOMPRESSOR MODELS	C 240 MODELS	C 320 MODELS	C 55 AMG <sup>1</sup> SPORT SEDAN						
<b>Engine type</b> Construction	<b>1,796-cc supercharged DOHC 16-valve inline-4.</b> High-pressure die-cast alloy cylinder block. Alloy heads.	<b>2,597-cc SOHC 18-valve 90° V-6.</b> High-pressure die-cast alloy cylinder block. Alloy heads.	<b>3,199-cc SOHC 18-valve 90° V-6.</b> High-pressure die-cast alloy cylinder block. Alloy heads.	<b>5,439-cc AMG-built SOHC 24-valve 90° V-8.</b> High-pressure die-cast alloy cylinder block. Reinforced crankshaft and valvetrain. Alloy heads. Lightweight camshafts. Reinforced block, oil pan structure, pistons, connecting rods and crankshaft.						
Net power	189 hp @ 5,800 rpm	168 hp @ 5,700 rpm	215 hp @ 5,700 rpm	362 hp @ 5,750 rpm						
Net torque	192 lb-ft @ 3,500–4,000 rpm	177 lb-ft @ 4,700 rpm	229 lb-ft @ 3,000–4,600 rpm	376 lb-ft @ 4,000 rpm						
Compression ratio	8.7:1	10.5:1	10.0:1	11.0:1						
Induction	Variable intake-valve timing. Roots-type rotary-piston supercharger with air-to-air intercooler.	Magnesium 2-stage <b>resonance intake manifold</b> increases intake runner length at lower rpm for improved response.								
Fuel and ignition system	SIM 4 engine management. Integrated <b>sequential multipoint fuel injection and ignition</b> includes individual cylinder control of fuel spray, spark timing and antiknock. Electronic throttle.	ME 2.8 engine management. Integrated <b>sequential multipoint fuel injection and phased twin-spark ignition</b> includes individual cylinder control of fuel spray, spark timing and antiknock. Electronic throttle. Two high-energy ignition coils and two spark plugs per cylinder, with 160,000-km spark plug intervals.								
Fuel requirement	Premium unleaded gasoline, 91 pump octane.	Rear-wheel drive: <b>Flexible Fuel Vehicles</b> can operate on premium unleaded gasoline (91 pump octane), ethanol (E85), or a blend of E85 and premium gasoline. 4MATIC™ models: Premium unleaded gasoline, 91 pump octane.	Premium unleaded gasoline, 91 pump octane.							
Fuel tank capacity	62.0 litres (with 8.0-litre reserve)	62.0 litres (with 8.0-litre reserve)	62.0 litres (with 8.0-litre reserve)	62.0 litres (with 8.0-litre reserve)						
DRIVETRAIN										
<b>Manual transmission</b>	<b>Standard.</b>	Not available.	<b>Standard</b> on Sport models, not available on 4MATIC Sedan.	Not available.						
	Fully synchronized <b>6-speed</b> with direct-action short-throw shifter and clutch-starter interlock.									
<b>Automatic transmission</b>	Optional.	<b>Standard.</b>	<b>Standard</b> on 4MATIC Sedan, optional on Sport models.	<b>Standard</b> , AMG-enhanced.						
Type	Electronically controlled <b>5-speed. Driver-adaptive programming</b> adjusts shift points to the driver's current driving style.									
Touch Shift	<b>Touch Shift</b> allows driver to manually downshift and allow upshifts by nudging the shift lever left or right from the Drive position.									
Shift into Optimum Gear	<b>Shift into Optimum Gear</b> programming allows one-touch selection of the best gear for maximum acceleration or engine braking by holding the shift lever to the left of Drive for one second.									
Comfort mode	Driver-selectable <b>Comfort mode</b> starts vehicle moving in 2nd gear or a second Reverse gear, and upshifts at lower rpm, to help improve control on slippery surfaces.									
Display	Instrument-cluster readout of selected gear range and Standard/Comfort mode. (Manual mode included on C55 AMG Sport Sedan.)									
AMG transmission enhancements	Not available.	Not available.	Not available.	<b>Standard.</b>						
	<b>AMG SpeedShift™</b> programming provides up to 35% faster gear changes, automatically downshifts during braking, prevents unwanted upshifting while cornering, offers one-touch selection of the best gear for maximum acceleration (Shift into Optimum Gear), and features torque converter lockup in all forward gears. <b>Fingertip manual mode</b> allows direct-access shifting through forward gears via buttons on back of upper steering-wheel spokes (left button downshifts, right button upshifts) or via Touch Shift feature of shift lever, and will automatically intervene only to induce an upshift at redline, to downshift as needed upon full throttle, and to select 1st gear when the vehicle stops. In Standard and Comfort modes, the steering-wheel buttons operate the Touch Shift feature.									
<b>Drive configuration</b>	<b>Rear-wheel drive (4MATIC all-wheel drive on 4MATIC models).</b>									
Rear axle ratio	3.46:1	3.46:1	3.27:1	3.06:1						
TRACTION / STABILITY										
<b>Electronic Stability Program (ESP)</b>	<b>ESP</b> compares the driver's intended course, via steering and braking inputs, to the vehicle's response, via lateral acceleration, rotation (yaw) and individual wheel speeds. ESP then brakes individual front or rear wheels and/or reduces excess engine power as needed to help correct understeer (plowing) or oversteer (fishtailing). ESP also integrates all-speed traction control, which senses drive-wheel slip under acceleration and individually brakes the slipping wheel or wheels, and/or reduces excess engine power, until control is regained. <sup>2</sup>									
<b>4MATIC all-wheel drive</b> with 4-wheel Electronic Traction System (4-ETS)	<b>4MATIC</b> models feature a permanent 40/60 front/rear torque split maintained via a planetary centre differential. <b>4-ETS</b> monitors the speed of all four wheels to detect wheel slip, then applies individual brakes as needed to provide the effect of locking the front, rear and/or centre differentials, and/or reduces excess engine power. 4-ETS continually balances the torque split to ensure that power is permitted to flow to the wheel(s) with traction. 4MATIC also incorporates the functions of ESP. <sup>2</sup>									
PERFORMANCE	C 230 KOMPRESSOR	SPORT COUPE	SEDANS	C 240 SEDANS	WAGONS	C 320	SPORT COUPE	SEDANS	C 55 AMG	SPORT SEDAN
<b>Acceleration, 0–100 km/h<sup>3</sup></b>	Manual: 7.4 seconds Automatic: 7.7 seconds	7.4 seconds 8.0 seconds	7.8 seconds 8.0 seconds	RWD: 8.9 seconds 4MATIC: Not available.	8.9 seconds Not available.	Manual: 7.0 seconds Automatic: 7.1 seconds	7.0 seconds 7.1 seconds	7.0 seconds 7.1 seconds	Automatic: 5.1 seconds	5.1 seconds
<b>Fuel economy,<sup>4</sup> city–highway estimate</b>	Manual: 10.1–7.0 l/100 km Automatic: 10.1–6.8 l/100 km	10.1–7.0 l/100 km 10.1–6.8 l/100 km	10.3–6.8 l/100 km 9.9–6.7 l/100 km	RWD: 12.0–8.6 l/100 km 4MATIC: 12.3–8.7 l/100 km	12.0–8.5 l/100 km 12.7–9.2 l/100 km	Manual: 13.5–9.0 l/100 km Automatic: 12.4–9.0 l/100 km 4MATIC: Not available.	13.5–9.0 l/100 km 12.4–9.0 l/100 km Not available.	12.7–8.3 l/100 km 11.8–8.2 l/100 km 12.2–8.4 l/100 km	Automatic: 14.9–10.0 l/100 km	14.9–10.0 l/100 km

<sup>1</sup> Delayed availability. <sup>2</sup> No system, no matter how sophisticated, can repeal the laws of physics or overcome careless driving actions. Please always wear your seat belt. <sup>3</sup> Stated rates of acceleration are based upon manufacturer's track results and may vary depending upon model, environmental and road surface conditions, driving style, elevation and vehicle load. <sup>4</sup> These estimates are based on the Government of Canada's approved criteria and testing methods. The actual fuel consumption of this vehicle may vary. Refer to the *Fuel Consumption Guide*. <sup>5</sup> AMG 18" wheels and accompanying high-speed-rated tires provide substantially increased treadwear and reduced ride comfort compared to H-rated tires. Serious wheel and tire damage may occur if the vehicle is operated on rough or damaged road surfaces or upon encountering road debris or obstacles. <sup>6</sup> Z-rated tires are optimized for performance driving and may provide reduced ride comfort, increased tire noise, substantially increased treadwear and greater susceptibility to damage compared to H-rated tires. <sup>7</sup> Braking effectiveness also depends on proper brake system maintenance, and tire and road conditions. <sup>8</sup> Figures are with optional sunroof.

		SEDANS AND WAGONS <i>ELEGANCE</i> SEDANS AND WAGONS C 320 4MATIC SEDAN			C 230 KOMPRESSOR AND C 320 SPORT SEDANS	C 55 AMG SPORT SEDAN <sup>1</sup>
<b>SUSPENSION / STEERING</b>		<b>C 230 KOMPRESSOR SPORT COUPE</b>	<b>C 320 SPORT COUPE</b>			
<b>Suspension</b>		<b>Front:</b> Independent <b>3-link</b> with antidive geometry. Stabilizer bar. <b>Rear:</b> Independent <b>5-arm multilink</b> with geometry for antisquat and alignment control. Stabilizer bar.				
Springs and shock absorbers		Lowered ride height. Front coil springs over sport-tuned gas-pressurized shock absorbers. Separate rear coil springs and sport-tuned shock absorbers.	Lowered ride height. Front coil springs over sport-tuned gas-pressurized shock absorbers. Separate rear coil springs and sport-tuned shock absorbers.	Front coil springs over gas-pressurized shock absorbers. Separate rear coil springs and gas-pressurized shock absorbers.	Lowered ride height. Front coil springs over sport-tuned gas-pressurized shock absorbers. Separate rear coil springs and sport-tuned shock absorbers.	AMG-calibrated front coil springs over AMG gas-pressurized shock absorbers. Separate AMG-calibrated rear coil springs and AMG gas-pressurized shock absorbers.
<b>Steering</b>		<b>Rack-and-pinion</b> with <b>power assist</b> and integrated hydraulic damper. <b>Steering wheel turns:</b> 2.8 lock-to-lock. <b>Turning circle:</b> 35.3 ft/10.76 m curb-to-curb.				
<b>WHEELS / TIRES</b>						
<b>Wheels, aluminium-alloy</b>		<b>5-spoke</b> , 7.0Jx16 front and rear. <b>Optional Evolution Package:</b> <b>7-spoke</b> , 7.5Jx17 front–8.5Jx17 rear.	<b>7-spoke</b> , 7.5Jx17 front–8.5Jx17 rear.	<b>Sedans and Wagons:</b> <b>7-spoke</b> , 7.0Jx16 front and rear. <b>Elegance models, C 320 4MATIC Sedan:</b> <b>7-hole</b> , 7.0Jx16 front and rear.	<b>5-spoke</b> , 7.5Jx17 front–8.5Jx17 rear.	Polished <b>AMG double-spoke</b> , <sup>5</sup> 7.5Jx18 front–8.5Jx18 rear.
<b>Tires, steel-belted radial</b>		<b>205/55HR16</b> , all-season performance. <b>Optional Evolution Package:</b> <b>225/45ZR17</b> front– <b>245/40ZR17</b> rear, high performance. <sup>6</sup>	<b>225/45ZR17</b> front– <b>245/40ZR17</b> rear, high performance. <sup>6</sup>	<b>205/55HR16</b> , all-season performance.	<b>225/45ZR17</b> front– <b>245/40ZR17</b> rear, high performance. <sup>6</sup>	<b>225/40ZR18</b> front– <b>245/35ZR18</b> rear, high performance. <sup>6</sup>
<b>BRAKES</b>						
<b>Brake system</b>		Dual-circuit power-assisted <b>4-wheel disc</b> .	Dual-circuit power-assisted <b>4-wheel disc</b> .	Dual-circuit power-assisted <b>4-wheel disc</b> .	Dual-circuit power-assisted <b>4-wheel disc</b> .	Dual-circuit power-assisted <b>4-wheel disc</b> .
Brake discs, front/rear		Ventilated/solid.	Ventilated/solid.	Ventilated/solid.	Perforated and ventilated/solid.	Perforated and ventilated/ventilated.
Brake calipers, front/rear		1-piston floating/1-piston floating.	1-piston floating/1-piston floating.	1-piston floating/1-piston floating.	2-piston fixed/1-piston floating.	Enlarged AMG 4-piston fixed/2-piston fixed.
<b>Antilock Braking System (ABS)</b>		<b>ABS</b> senses impending wheel lockup under heavy braking and pumps the front brakes individually or the rear brakes together (to help maintain stability) as needed up to 30 times per second, to prevent lockup and maintain steering ability.				
<b>Brake Assist</b>		<b>Brake Assist</b> senses emergency braking via the speed at which the driver presses the brake pedal and immediately applies maximum available power boost, potentially reducing the overall stopping distance by eliminating the delay caused by a common human tendency not to brake hard enough, soon enough. Letting up on the brake pedal releases Brake Assist. <sup>7</sup>				
<b>EXTERIOR DIMENSIONS</b>		<b>SPORT COUPES</b>	<b>SEDANS AND <i>ELEGANCE</i> SEDANS</b>	<b>WAGONS</b>	<b>C 230 KOMPRESSOR/C 320 SPORT SEDANS</b>	<b>C 55 AMG SPORT SEDAN</b>
<b>Wheelbase</b>		106.9 in/2,715 mm	106.9 in/2,715 mm	106.9 in/2,715 mm	106.9 in/2,715 mm	106.9 in/2,715 mm
<b>Overall length</b>		171.2 in/4,348 mm	178.2 in/4,526 mm	178.9 in/4,541 mm	178.4 in/4,531 mm	181.8 in/4,617 mm
<b>Overall height</b>		55.4 in/1,407 mm	55.1 in/1,400 mm	56.7 in/1,441 mm (including roof rails)	55.6 in/1,412 mm	55.6 in/1,412 mm
<b>Overall width</b>		68.0 in/1,728 mm	68.0 in/1,728 mm	68.0 in/1,728 mm	68.0 in/1,728 mm	68.0 in/1,728 mm
<b>Track, front</b>		59.2 in/1,504 mm	59.3 in/1,505 mm	59.3 in/1,505 mm	59.3 in/1,506 mm	59.3 in/1,506 mm
<b>Track, rear</b>		58.1 in/1,476 mm	58.1 in/1,476 mm	58.1 in/1,476 mm	58.1 in/1,476 mm	58.0 in/1,473 mm
<b>Coefficient of drag</b>		0.29	0.27	0.31	0.27	0.27
<b>Curb weight, RWD (4MATIC)</b>		<b>C 230 Kompressor:</b> 3,250 lb/1,474 kg <b>C 320:</b> 3,385 lb/1,535 kg	<b>C 230 Kompressor:</b> 3,240 lb/1,470 kg <b>C 240:</b> 3,360 lb/1,524 kg (3,520 lb/1,597 kg) <b>C 240 Elegance:</b> 3,360 lb/1,524 kg (3,520 lb/1,597 kg) <b>C 320 4MATIC:</b> 3,615 lb/1,640 kg	<b>C 240:</b> 3,470 lb/1,574 kg (3,625 lb/1,644 kg) <b>C 240 Elegance:</b> 3,470 lb/1,574 kg (3,625 lb/1,644 kg)	<b>C 230 Kompressor:</b> 3,240 lb/1,470 kg <b>C 320:</b> 3,430 lb/1,556 kg	3,540 lb/1,605 kg
<b>INTERIOR DIMENSIONS<sup>8</sup></b>		<b>SPORT COUPES</b>	<b>SEDANS</b>	<b>WAGONS</b>		
		<b>Front</b>	<b>Front</b>	<b>Front</b>	<b>Front</b>	<b>Rear</b>
<b>Headroom</b>		38.5 in/979 mm	36.3 in/922 mm	38.9 in/987 mm	37.3 in/948 mm	38.5 in/979 mm
<b>Legroom</b>		42.0 in/1,067 mm	33.0 in/837 mm	41.7 in/1,059 mm	33.0 in/838 mm	42.0 in/1,067 mm
<b>Hiproom</b>		52.9 in/1,344 mm	45.8 in/1,163 mm	51.9 in/1,318 mm	54.5 in/1,384 mm	51.9 in/1,318 mm
<b>Shoulder room</b>		52.8 in/1,341 mm	51.7 in/1,312 mm	53.1 in/1,350 mm	54.3 in/1,378 mm	53.1 in/1,350 mm
<b>Cabin capacity</b>		84.9 cu ft/2,488 litres		85.5 cu ft/2,506 litres		89.3 cu ft/2,616 litres
<b>Cargo capacity</b>		9.9 cu ft/280 litres (rear seats in use) 38.1 cu ft/1,080 litres (rear seats folded)		12.2 cu ft/345 litres		25.2 cu ft/713 litres (rear seats in use) 63.6 cu ft/1,800 litres (rear seats folded)

C 230 Kompressor Sport Coupe	C 230 Sport Coupe	C 230 Kompressor Sport Sedan	C 230 Sport Sedan	C 55 AMG Sport Sedan <sup>1</sup>	C 230 Kompressor Sedan	C 240 Sedans/Wagons	C 240 Elegance Sedans/Wagons	C 320 4MATIC Sedan
------------------------------	-------------------	------------------------------	-------------------	-----------------------------------	------------------------	---------------------	------------------------------	--------------------

**EXTERIOR APPEARANCE**

■	■	■	■	■	■	■	■	■	Atlas Grey grille with chrome trim and grille-mounted Star.
□ <sup>2</sup>	■	■	■	■	■	■	■	■	Perforated Silver grille with chrome trim and grille-mounted Star.
■	■	■	■	■	■	■	■	■	Black grille with three chrome ribs and chrome surround. Hood-mounted Star.
■	■	■	■	■	■	■	■	■	Atlas Grey grille with chrome surround. Hood-mounted Star.
■	■	■	■	■	■	■	■	■	Atlas Grey grille with three chrome ribs and chrome surround. Hood-mounted Star.
■	■	■	■	■	■	■	■	■	Chrome slat-type grille. Hood-mounted Star.
□ <sup>3</sup>	□ <sup>3</sup>	■	■	■	■	■	■	■	Colour-keyed door handles (with chrome trim on C 240 <i>Elegance</i> and C 320 4MATIC™ models).
□ <sup>3</sup>	□ <sup>3</sup>	■	■	■	■	■	■	■	Chrome trim on bumpers and rub strips.
■	■	■	■	■	■	■	■	■	AMG-design lower bodywork: Front air dam with mesh air intakes, side skirts and rear apron (with CLK-inspired design on C 55 AMG).
■	■	■	■	■	■	■	■	■	Neutral-tinted glass.
■	■	■	■	■	■	■	■	■	Blue-tinted glass.

**EXTERIOR FEATURES**

■	■	■	■	■	■	■	■	■	Power tilt/sliding tinted glass sunroof with one-touch express-open/close.
■	■	■	■	■	■	■	■	■	Dual power mirrors, linked to seat memory <sup>4</sup> and automatically heated.
□	□	□	■	■	■	■	■	■	Parking-assist right-side mirror can tilt down upon shifting to Reverse. <sup>1</sup>
■	■	■	■	■	■	■	■	■	Electrically heated rear window with auto-shutoff based on time and outside temperature.
■	■	■	■	■	■	■	■	■	Dual aero-blade windshield wipers. Heated windshield washer nozzles, lines and reservoir.
■	■	■	■	■	■	■	■	■	Intermittent rear-window wiper, with washer. When the front wipers are on, shifting to Reverse activates the rear-window wiper (wagons only).
■	■	■	■	■	■	■	■	■	Protective-coated roof rails (wagons only).

**EXTERIOR LIGHTING**

■	■	■	■	■	■	■	■	■	Variable-focus halogen headlamps with clear high-impact polycarbonate lenses.
■	■	■	■	■	■	■	■	■	Halogen front foglamps, in front apron. Single red rear foglamp, integrated in left taillamp cluster.
■	■	■	■	■	■	■	■	■	Driver-selectable light-sensing headlamps can be set via the Auto position of the headlamp switch to automatically illuminate in darkness, and when entering dark tunnels or parking garages.
■	■	■	■	■	■	■	■	■	Driver-programmable Daytime Running Lamps illuminate low-beam headlamps at reduced intensity (full intensity for optional Bi-Xenon lamps) in daylight, with auto-on override in darkness.
■	■	■	■	■	■	■	■	■	Automatic lamp substitution uses a nearby lamp if a critical bulb fails.
■	■	■	■	■	■	■	■	■	Touch Turn Signals flash three times with one touch of turn-signal lever, for lane-changing. Auxiliary LED turn signal indicators are integrated with side mirror housings.

**LOCKING / SECURITY**

■	■	■	■	■	■	■	■	■	SmartKey uses an electronic code to unlock the steering column and ignition. Removing SmartKey from ignition disables engine computer to help prevent unauthorized starting.
■	■	■	■	■	■	■	■	■	SmartKey remote control integrates: Door lock/unlock buttons (including liftgate on Sport Coupes and wagons). Trunk opener (sedans). Removable valet key (plus optional antitheft alarm panic button, if equipped). Driver may selectively unlock only the driver's door and fuel filler, or both doors plus the trunk/liftgate and fuel filler.
■	■	■	■	■	■	■	■	■	SmartKey remote locking uses redundant infrared and radio-frequency signals for improved range, and rolling-code signal for protection from transmitter cloning.
■	■	■	■	■	■	■	■	■	SmartKey offers infrared-remote opening/closing of windows (plus optional sunroof, if equipped) from outside the car.
■	■	■	■	■	■	■	■	■	Driver-programmable user-recognition feature links each SmartKey to driver's preferences (up to three individual users per car) for: Driver's seat memory settings <sup>4</sup> (all 3 presets, including steering column and outside mirror positions). Various climate control settings. Vehicle configuration settings from multifunction display, including language and lighting modes.
■	■	■	■	■	■	■	■	■	Driver-programmable driveaway locking can automatically lock the doors when car reaches 15 km/h.
■	■	■	■	■	■	■	■	■	Night security illumination uses the car's exterior lights to help illuminate a path after parking. Driver-programmable intervals allow lights to stay on for 60, 45, 30 or 15 seconds, or not at all.
■	■	■	■	■	■	■	■	■	Locator lighting uses the car's lights to help light a return path when the car is remote-unlocked in darkness. Unlocking car activates illuminated entry system.
■	■	■	■	■	■	■	■	■	Emergency trunk release, located inside cargo area and illuminated for 60 minutes after trunk lid is closed (sedans and Sport Coupes only).

■ **STANDARD**  
 □ **OPTIONAL**  
 – **NOT AVAILABLE**

<sup>1</sup> Delayed availability. <sup>2</sup> Included with optional Evolution Package. <sup>3</sup> Included with optional Chrome Package. <sup>4</sup> Included with optional 10-way power driver's seat, memory system and power steering column. <sup>5</sup> Please obey all speed laws. Top speed electronically limited to 250 km/h. <sup>6</sup> **WARNING:** THE FORCES OF A DEPLOYING AIR BAG CAN CAUSE SERIOUS OR FATAL INJURY TO A CHILD UNDER AGE 13. THE SAFEST SEATING POSITION FOR YOUR CHILD IS IN THE REAR SEAT, BELTED INTO AN APPROPRIATE, PROPERLY INSTALLED CHILD SEAT, OR CORRECTLY WEARING A SEAT BELT IF TOO LARGE FOR A CHILD SEAT. SEE OPERATOR'S MANUAL FOR ADDITIONAL WARNINGS AND INFORMATION ON AIR BAGS, SEAT BELTS AND CHILD SEATS.

C 230 Kompressor Sport Coupe	C 320 Sport Coupe	C 230 Kompressor Sport Sedan	C 320 Sport Sedan	C 55 AMG Sport Sedan <sup>1</sup>	C 230 Kompressor Sedan	C 240 Sedans/Wagons	C 240 Elegance Sedans/Wagons	C 320 4MATIC Sedan
------------------------------	-------------------	------------------------------	-------------------	-----------------------------------	------------------------	---------------------	------------------------------	--------------------

**INTERIOR FEATURES**

■	■	■	■	■	■	■	■	■	Multifunction steering wheel provides convenient, additional controls for basic functions of audio system and optional phone, plus operation of multifunction display.
■	■	■	■	■	■	■	■	■	Power windows (front only on Sport Coupes), with one-touch express-up/down.
■	■	■	■	■	■	■	■	■	4-way (tilt/telescoping) manually adjustable steering column.
□ <sup>4</sup>	□ <sup>4</sup>	□ <sup>4</sup>	■	■	■	■	■	■	4-way power steering column, position linked to driver's seat memory.
■	■	■	■	■	■	■	■	■	Electronic cruise control.
□	□	□	□	□	□	□	□	□	Auto-dimming rearview and driver's side mirror and integrated 3-button garage door opener.
■	■	■	■	■	■	■	■	■	Delayed-shutoff front courtesy lamps. Dual front reading lamps. Rear-cabin courtesy lamp. Dual illuminated vanity mirrors.
■	■	■	■	■	■	■	■	■	Entrance lamps in front doors.
■	■	■	■	■	■	■	■	■	Height-adjustable front centre armrest with dual enclosed storage compartments and 3-way lid (upper tray opens from left or right, lower compartment from front). Illuminated 2-tier glovebox.
■	■	■	■	■	■	■	■	■	Retractable large-capacity dual front cupholder. Pockets in all doors. Parcel net in right front footwell (not included in 4MATIC models).
■	■	■	■	■	■	■	■	■	Magazine pockets on both front seatbacks.
■	■	■	■	■	■	■	■	■	Folding rear centre armrest with slide-out dual cupholder.
■	■	■	■	■	■	■	■	■	Illuminated, carpeted cargo area.
■	■	■	■	■	■	■	■	■	Removable rigid cargo cover.
■	■	■	■	■	■	■	■	■	Retractable/removable vertical partition net and horizontal luggage cover. Luggage cover features one-touch retraction for more convenient loading of cargo area (wagons only).
■	■	■	■	■	■	■	■	■	Parcel net and 12-volt power outlet in cargo-area side panel. Concealed underfloor storage, with collapsible/removable carry-crate (wagons only).
■	■	■	■	■	■	■	■	■	Dual-zone CFC-free automatic climate control with dual rotary temperature controls, automatic control of blower speed and airflow distribution (with manual override). Dash-top diffuser vent. Rear-cabin air vents at rear of front console. Electrostatic dust and pollen filter.
■	■	■	■	■	■	■	■	■	Tunnel mode offers one-touch closing of all windows, the sunroof or Panorama roof (if equipped) and cabin air intake by pressing and holding the air-recirculation button. Pressing button again restores previous window and sunroof positions.

**SEATING / TRIM**

■	■	■	■	■	■	■	■	■	10-way manually adjustable front seats.
■	■	■	■	■	■	■	■	■	10-way adjustable front seats, with power adjustment for height and recline.
□ <sup>4</sup>	□ <sup>4</sup>	□ <sup>4</sup>	■	■	■	■	■	■	10-way power driver's seat, each with 3-position memory (linked to SmartKey user-recognition feature). Driver's seat memory includes steering column and outside mirror positions.
■	■	■	■	■	■	■	■	■	Sport front seats.
□	□	□	□	□	□	□	□	□	Heated front seats.
■	■	■	■	■	■	■	■	■	Rear-seat easy-entry system: When either front seatback is tipped forward, the entire seat moves up and forward for easier access to the rear cabin. Each seat returns to its previous position when its seatback is returned upright.
■	■	■	■	■	■	■	■	■	60/40-split folding rear seatbacks and flip-forward seat cushions (standard on wagons; includes centre-armrest pass-through with ski sack on sedans).
■	■	■	■	■	■	■	■	■	Black M-B Tex upholstery.
■	■	■	■	■	■	■	■	■	M-B Tex upholstery with leather front seating inserts.
■	■	■	■	■	■	■	■	■	AMG-design Nappa leather upholstery with Alcantara shoulder inserts.
□ <sup>2</sup>	■	■	■	■	■	■	■	■	Black leather-trimmed 3-spoke sport steering wheel with raised thumbgrips and Silver buttons.
■	■	■	■	■	■	■	■	■	Colour-keyed leather-trimmed 4-spoke steering wheel and shift knob.
□ <sup>2</sup>	■	■	■	■	■	■	■	■	Silver sport shift knob.
■	■	■	■	■	■	■	■	■	Black leather-trimmed and Silver sport shift knob.
■	■	■	■	■	■	■	■	■	AMG-design colour-keyed Nappa leather-trimmed sport shift knob.
□ <sup>2</sup>	■	■	■	■	■	■	■	■	Rubber-studded aluminium pedals, including parking brake.
■	■	■	■	■	■	■	■	■	Charcoal linear-pattern aluminium trim on dash and console, with polished chrome highlights.
■	■	■	■	■	■	■	■	■	Silver linear-pattern aluminium trim on doors, dash and console, with polished chrome highlights.
■	■	■	■	■	■	■	■	■	Hand-polished Olive Ash wood trim on doors, dash and console, with polished chrome highlights.
■	■	■	■	■	■	■	■	■	Hand-polished Laurel wood trim on doors, dash and console, with polished chrome highlights.
■	■	■	■	■	■	■	■	■	Velour floor carpeting and floor mats (AMG floor mats on C 55 AMG).





Mercedes-Benz Canada Inc.  
98 Vanderhoof Avenue  
Toronto, Ontario M4G 4C9  
1-800-387-0100  
[www.mercedes-benz.ca](http://www.mercedes-benz.ca)

© 2004 Mercedes-Benz Canada Inc.  
Marketing Communications

All illustrations and specifications contained in this brochure are based on the latest product information available at the time of publication. Mercedes-Benz reserves the right to make changes at any time, without notice, in colours, materials, equipment, specifications and models. Any variations in colours shown are due to reproduction variations of the printing process. Illustrations may include test situations. Some vehicles may be shown with non-Canadian equipment. Some vehicles are shown with optional equipment. HomeLink is a registered trademark of Prince, a Johnson Controls Company. harman/kardon and LOGIC7 are registered trademarks of Harman International Industries, Inc.

♻️ In an effort to minimize the environmental impact of this brochure, Mercedes-Benz uses a recycled coated paper that is guaranteed in writing to contain a minimum of 10% post-consumer waste.

Printed in Canada  
MBC-04-631-38



Mercedes-Benz

C 240 *Elegance* Sedan shown on cover with optional Granite Grey metallic paint, sunroof, and Bi-Xenon headlamps with washers.